

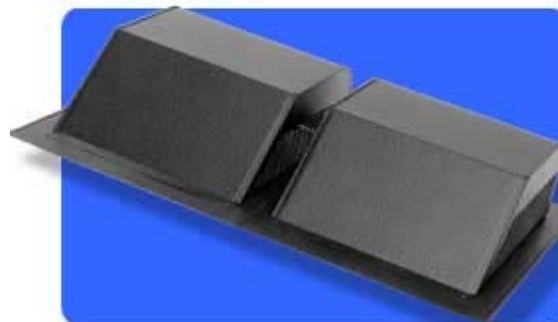
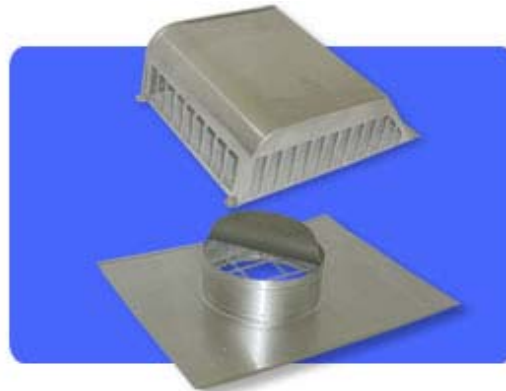


## 700 Series Roof Louver

- Three sides louvered for greater air flow.
- Large nailing flange.
- All-aluminum rust-free construction.
- Fits all pitched roofs.
- Weather-tight seamed collar.
- High profile for increased weather protection and circulation.
- Prevents roof discoloration.
- Bird-proof.
- Embossed aluminum mill and painted finishes.
- 700 has neoprene damper for use as kitchen/bathroom exhaust vent.
- 770-D is a twin 770; off-ridge vent.
- 750-E is a 750 with an extended flange size.
- 750-G; heavy duty galvanized steel construction.
- These are exhaust vents and require proper intake to create a balanced ventilation system.



[Instructions & Downloads - Ventilation Guide](#)



Colors

Mill
White
Brown
Black
Weathered Bronze
Forest Green (750 Only)



(750) CSA-Approved  
#83070



"Windstorm"  
Approved  
Report #RV-11  
730, 750, 750-G, 770,  
770D

(730, 750, 770) Dade County  
Approved  
#07-0618.02

(770-D) Dade County  
Approved  
#05-0419.02

<b>Model Number</b>	<b>Overall Size (in.)</b>	<b>Opening Size (in.)</b>	<b>Net Free Area (in.2)</b>	<b>Number Per Carton</b>	<b>Weight Per Carton (lbs.)</b>
<b>730</b>	12-3/16 x 17-3/4 x 4	6 1/4	30	6	7 -1/4
<b>750</b>	16 x 20-5/16 x 5	8	50	6	11-1/4
<b>750-G</b>	16 x 20-5/16 x 5	8	50	6	21-3/4
<b>750-E</b>	23 x 27-1/4 x 5	8	50	6	15-1/2
<b>770</b>	16-5/8 x 22-3/8 x 6	9 1/2	70	6	13-1/2
<b>770-D</b>	32-1/2 x 22-3/8 x 6	Two 9-1/2	140	4	17-1/4
<b>700</b>	16 x 20-5/16 x 5	8	—	6	11-3/4

Copyright 1997 - 2010 Lomanco, Inc.

[Home](#)

[Products](#)

[About Lomanco](#)

[Online Store](#)

[Contact Us](#)