



**Lomanco**<sup>®</sup>  
Quality Ventilation Products Since 1946



Whirlybird<sup>®</sup> Turbine Vents

**HURRICANE CAPS** ↓  
**Buy Online Now!**

[Instructions & Downloads - Ventilation Guide](#)



Colors

Mill
White
Brown
Black
Weathered Bronze



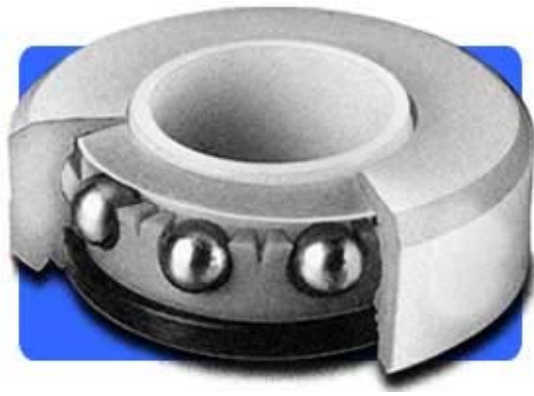
"Windstorm" Approved  
Report #RV-12  
(BIB-12 & BEB-12)

Dade County Approved  
(BEB-12, BIB-12, BEB-12TR, BIB-12TR)  
Acceptance #07-0618.01  
(BEB-14, BIB-14) Acceptance #05-0823.06

General Specifications	Model Number	Turbine Dimensions (in)			Approximate Shipping Weight (lbs)
		Hole Size	Height	Base	
<ul style="list-style-type: none"> <li>• BIB &amp; TIB are "Internally" braced.</li> <li>• BEB &amp; TEB are "Externally" braced.</li> <li>• IB-8 available in Mill Finish only.</li> <li>• Model Number denotes Throat Size.</li> <li>• TR turbines are for tile roof applications.</li> <li>• "B" Series are packaged with base.</li> <li>• "T" Series are packaged without base.</li> </ul>	<b>B I B-12</b>	12	17-1/4	20x20	6-1/2
	<b>BEB-12</b>	12	17-5/8	20x20	6-3/4
	<b>B I B-12TR</b>	12	20-1/4	20x20	6-3/4
	<b>BEB-12TR</b>	12	20-5/8	20x20	6-3/4
	<b>B I B-14</b>	14	20	22x22	7-1/2
	<b>BEB-14</b>	14	20-3/8	22x22	7-3/4
	<b>T I B-12</b>	-	11-1/4	-	4-1/2
	<b>TEB-12</b>	-	11-5/8	-	4-3/4
	<b>T I B-14</b>	-	11-5/8	-	4-3/4
	<b>TEB-14</b>	-	12	-	5
	<b>I B-8 (Top)</b>	8	14-1/4	-	4
	<b>VP-8 (Bottom)</b>	---	7-3/4	16x16	2-1/4



## CUTAWAY OF BALL BEARING SYSTEM



Copyright 1997 - 2010 Lomanco, Inc.

[Home](#)

[Products](#)

[About Lomanco](#)

[Online Store](#)

[Contact Us](#)